

1. Technology Existing Conditions (cont.)



**ELEMENTARY SCHOOL**

**Telecommunications Infrastructure**

**Horizontal Cabling**

1. Network cabling upgraded to category 6 during last capital project. Voice cabling is legacy Category 3.
2. Network and voice cabling are typically supported by cable tray or J-hooks.
3. Typical classroom cabling with (2) Category 6 cables for teachers desk: (1) Category 6 cable for future AV connections, and; (1) Category 3 cable for classroom phone service.
4. Horizontal cabling may exceed 290' length limit. No cable performance test results are available to confirm the cable length. These classroom are:
  - 119
  - 120
  - 121
  - 122
  - 123
  - 124
  - 125
  - 126
  - 127
  - 128
  - 205
  - 206

**Intra-Building Backbone Cabling**

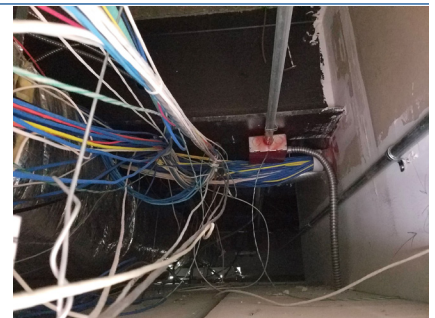
1. One type of backbone fiber optic cable: 50 micron OM3, 12 Strands
2. All fiber is armored type cable.

**Inter-Building Backbone Cabling**

Conforms to district trends.

**Communications Pathways**

1. Primary horizontal pathways are cable tray, J-hooks, conduit and conduit sleeves.
  - Conduit sleeves are at or exceed recommended fill capacity.
  - Sleeves are not firestopped.
2. Secondary horizontal pathways are divided surface raceway, recessed boxes with concealed conduit, and small surface raceway.
  - a. Some secondary horizontal pathways are 700 series surface raceway. These pathways are at capacity to with no room for additional cabling.
  - b. Divided surface raceway is typically installed in classroom



*Unsupported Horizontal Cabling*

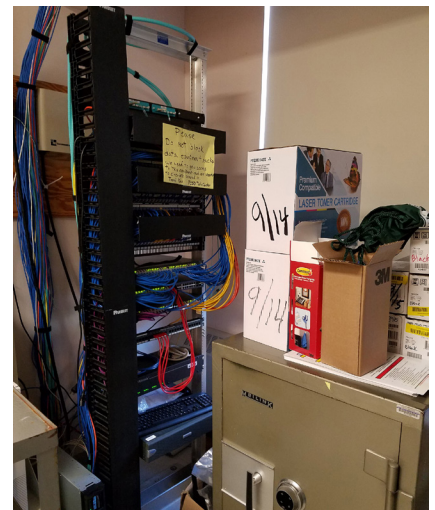
**Rooms/Spaces – Communications Equipment Rooms (CERs)**

There are three spaces that support technology equipment and infrastructure. All spaces are consistent with district trends.

**Data Room**

Serves as the building MTR.

1. Inter-building fiber optic cable terminated in wall-mount cabinet.
2. Open 2-post equipment rack. The cabling and equipment are unsecured in the shared space.
3. Access to the front and back of the equipment rack is limited due to the location of the rack and items stored in the room.
4. Power is labeled with panel and circuit identification.
5. Space has active cooling.
6. The space supports the building phone, PA, clock and security system.



*Main Technology Room*

*continued on next page*