

Technology Consultants for the systems that make buildings smarter

Intelligent Technology Infrastructures start here

Efficient daily operations in every market now rely on Technology systems that transport data as much the traditional MEP systems that move water, electricity and heat. Archi-Technology LLC, an independent Technology Consulting firm, saves its clients time and money on the Technology component of capital projects with comprehensive, knowledgeable Plan/Design/Construct and documentation services.

Acting on behalf of facility owners, Archi-Technology coordinates the planning, design and implementation of Technology infrastructure and systems with Architects, Engineers, Construction Managers, General Contractors and subcontractors. We save our clients millions of dollars each year in avoided Change Orders and other costly construction-related delays due to poor Technology planning.

As an independent Technology Consulting firm, free of product manufacturer commissions, we provide objective strategic and project consulting services to education and healthcare clients in the northeast U.S. that:

- Extend budgets by using an experienced team of credentialed specialists on an as-needed basis as an extension of your internal project team.
- Enable seamless implementation of robust technologies into your projects synchronized with staff, clients and contractors during all project phases.
- Eliminate surprises with coordination of architectural, mechanical and electrical requirements effected by information transporting systems.
- Maximize resources with information systems planning integrated with traditional building planning and design instead of waiting for construction.

Specific technology infrastructure and systems in which we specialize include:

Communications Infrastructures

- Pathways and Spaces
- Structured Cabling

Communication Systems

- Voice Systems
- Data Systems

Audio-Video (AV) Systems

- Integrated AV
- Public Address (PA)
- Master Clock

Building Systems

- Alarm
- Building Automation

Security Systems

- Video Surveillance
- Access Control (including Door Hardware)

Clinical Systems

- Nurse Call
- Patient Monitoring

See the back of this sheet for more information or call **585-424-1952** to discuss your specific needs.

ARCHI-TECHNOLOGY AT A GLANCE

Fast Facts

- Started in 1996
- (3) Registered Communications Distribution Designers (RCDDs)
- 15 – 20 total staff

Software Proficiencies

- AutoCad™
- REVIT™ and Building Information Management (BIM)
- MasterLibrary™ Construction Project Administration Software
- Google™ apps

Locations

- Northeast U.S. regional base
- Rochester, NY headquarters

An Unwavering Focus

Archi-Technology actively participated in the development of Divisions 27 and 28 in CSI's MasterFormat™.

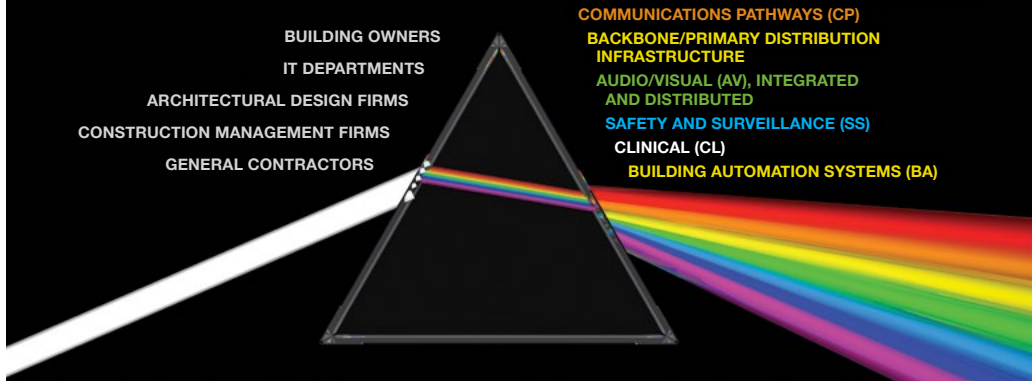
Our involvement started in 1998 with a grassroots effort to improve the process of integrating technology systems infrastructure into buildings during project design (versus construction).

Support for this initiative grew, ultimately resulting in three new divisions in the 2004 edition of the MasterFormat.



Technology Consultants for the 4th Utility

Technology Consulting Services



Project stakeholders (left) view Technology infrastructure and specialized facility-based systems (right) as a single entity when, in fact, their inter-related systems need to be carefully planned, designed and constantly coordinated with multiple stakeholders.

ARCHI-TECHNOLOGY AREAS OF EXPERTISE

Technology Infrastructure

- Pathways and Spaces
- Structured Cabling

Communication Systems

- Voice Systems
- Data Systems

Audio-Video (AV) Systems

- Integrated AV
- Public Address (PA)
- Master Clock

Building Systems

- Alarm
- Building Automation

Security Systems

- Video Surveillance
- Access Control including Door Hardware (*Division 8*)

Clinical Systems

- Nurse Call
- Patient Monitoring

Saving Time and Money For All Project Stakeholders

The following construction professionals have reaped the benefits of Archi-Technology's consulting services for technology infrastructure and systems:

- Architectural Design
- Construction Management
- Engineering
- Building Owners/Managers

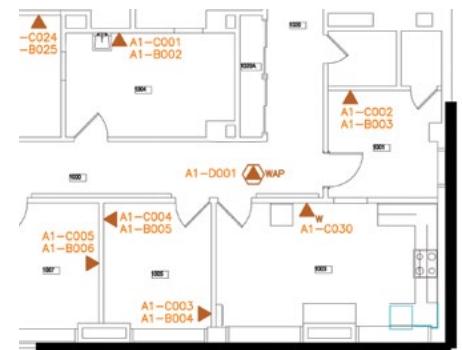
We also develop and maintain facility and systems documentation that can be used to manage campuses and reduce Total Cost of Ownership (TCO). Electronic Facility Records (EFR) and cloud-based project management software are just two of the technology-based tools we use to address the multi-faceted effects that Technology systems have on the plan, design, build and operate phases of a facility.

Our unbiased strategic advice uses a Design-To-Manage approach that adds value long after the project handover to the owner. We specialize in educational and healthcare campuses throughout the northeastern U.S. and are especially sensitive to the aesthetic design of historic buildings.

Smart Approaches To Project Design And Delivery

Archi-Technology's strict adherence to industry standards and proprietary best practices have been developed over the course of designing and delivering hundreds of technology projects for clients in education, healthcare and other markets. Our unique combination of project design and delivery approaches include:

1. Design-To-Manage philosophy to reduce Total Cost of Ownership.
2. Budget validation to ensure adequate project funding.
3. Systems Design Standards to provide objective criteria.
4. Project Management procedures to ensure consistent, smooth processes.
5. Design Checklists to provide quality control in all phases.
6. Rigorous field work to ensure accurate, up-to-date data.
7. Creative pathway design to save space and respects architecture.
8. Project management software to improve communications and collaboration.
9. Design Review process to keep all team members up to date.
10. T-Series Technology drawings to provide operational value.
11. Innovative As Built documentation to reduce operating and maintenance costs.



Innovative, electronic T-Series Technology drawings are changing expectations for our clients' As Built documentation.

For More Information

Please visit Archi-Technology.com for more information or call **585-424-1952** to discuss your specific project requirements.

